

Breathtaking Yosemite Valley Tour



VISUAL TRAVEL TOURS

Maps Show You Where... We Show You Why!

Table of Contents

[Cover](#)

[Tour Summary](#)

[Crown Jewel of California](#)

[Tips](#)

[Chapter 1 - Valley Overviews](#)

[Chapter 2 - Curry Village](#)

[Chapter 3 - Yosemite Village](#)

[Chapter 4 - The Ahwahnee](#)

[Maps](#)

[Author Biography](#)

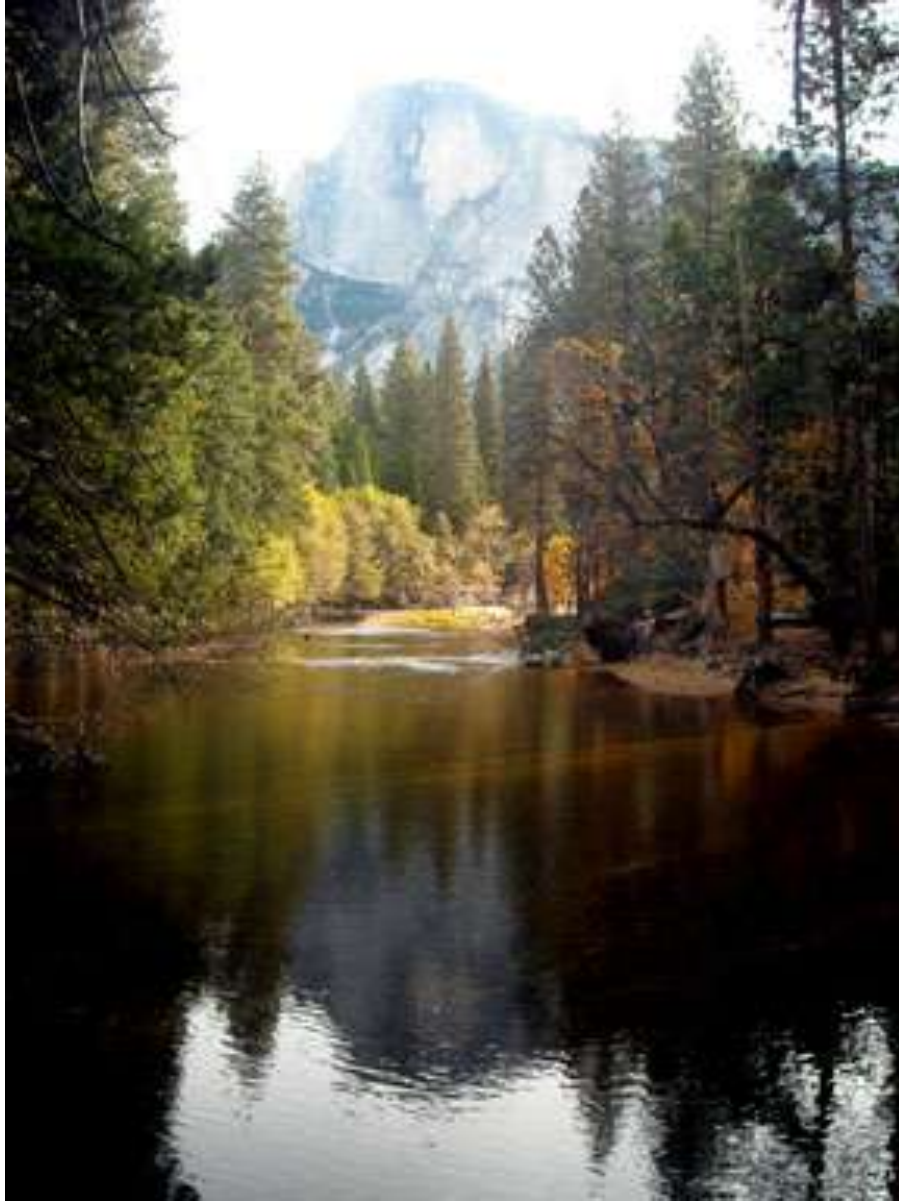
[Publisher](#)

Tour Summary

Yosemite National Park spans the eastern portions of Tuolumne, Mariposa, and Madera counties in east-central California, and across the western slopes of the Sierra Nevada mountain range. The entire Yosemite National Park covers an area of 761,266 acres, but this tour will survey only Yosemite Valley, which is by far the park's top attraction. Yosemite Valley stretches for seven miles in a roughly east-west direction, with an average width of about one mile. Within this sheer cliff valley are the highest waterfalls in North America, a host of visitor accommodations, plus a network of bicycle and hiking trails.

[Back to Table of Contents](#)

Crown Jewel of California





What do scenes from the film *The Shining*, the tallest waterfall in North America, and perhaps the most distinguished rock formation in the world all have in common? They are all found in Yosemite Valley!



Yosemite Valley is the crown jewel of Yosemite National Park, one of the most famously identifiable and most visited national parks in the world. It features a developed infrastructure that includes a multitude of visitor amenities and exceptional hiking trails.



Spanning the entire park are over 800 miles of trails available to hikers, ranging from an easy stroll, to the grueling hikes up several park mountains, to multiple-day backpacking trip options. This 3-D diorama

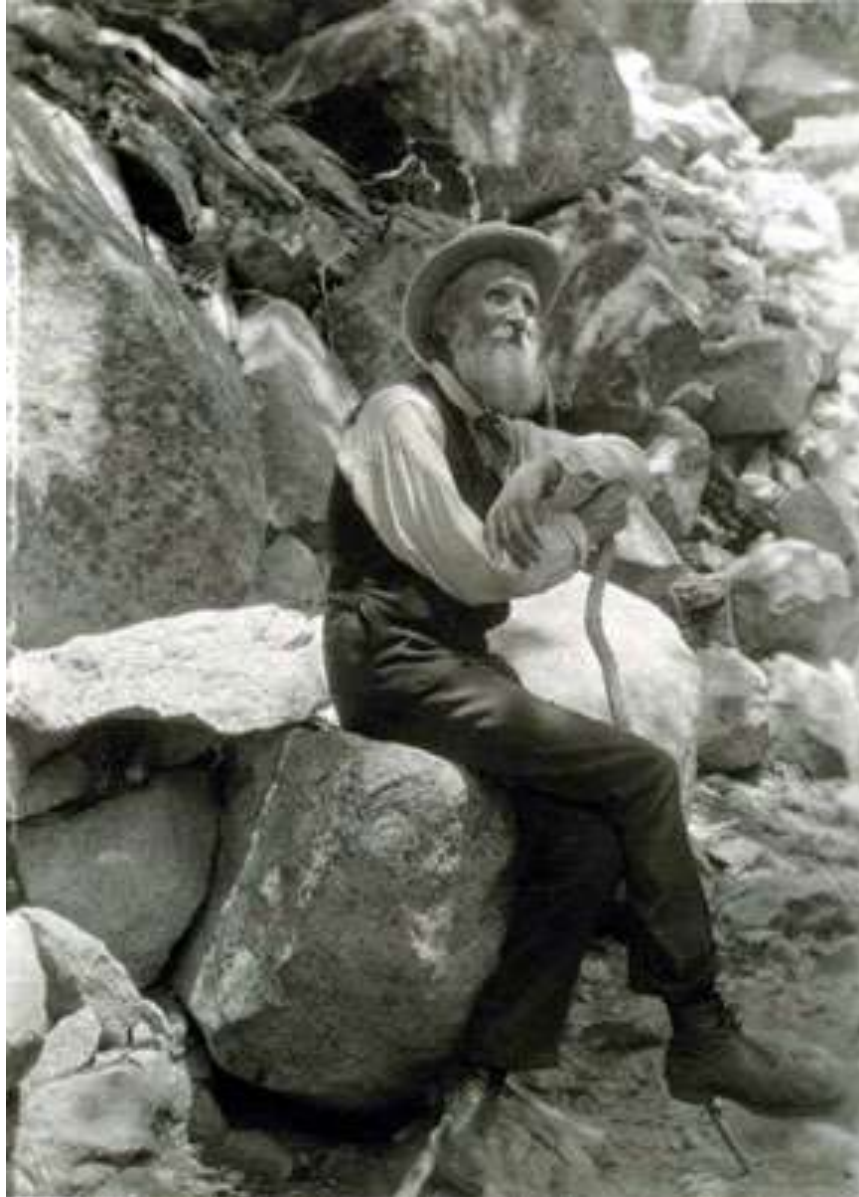
in the Visitor's Center color codes hiking trails within the valley. We will highlight some of the best Yosemite Valley hikes in each chapter.



We'll also explore all the accommodation options available to the visitors who come to the Yosemite Valley. From campgrounds and minimalist tent camping ...



... to the luxurious accommodations in the world-famous Ahwahnee Hotel, used by film director Stanley Kubrick for his movie *The Shining*, where many sets were modeled after the hotel interior.



We'll examine the efforts of Scottish-born naturalist John Muir who wrote articles popularizing the Yosemite Valley, and made scientific contributions of his own. Muir authored scientific papers on the

region's biology, building scientific interest in Yosemite, which ultimately led to the preservation of Yosemite Valley and many other natural lands.



In fact, John Muir's unyielding conservation efforts helped establish Yosemite as the very first state park in California, later to gain National Park status. Take a photo

with a statue of John Muir in the Yosemite Village Visitor's Center.



Or go ride a bike! Bicycle rentals are available in Yosemite Valley nine months a year, from spring through fall. Over 12 miles of dedicated paved bike trails are offered in Yosemite Valley. In addition, bicyclists can ride on regular roads.



But mostly Yosemite Valley is about stunning natural scenery, spectacular granite cliffs, clear streams and breathtaking waterfalls that flow year 'round.



Despite the millions of annual visitors, Yosemite Valley is also a wildlife refuge. We'll make a few wild animal sightings in the upcoming chapters.



As seen from an airplane the Yosemite Valley is a deep gash in the granite mountain range of the central Sierra Nevada. The most famous rock formation is Half Dome, clearly seen rising above the

valley, an irresistible feature we will highlight in the coming chapters.



Take a trip with us through the Yosemite Valley. This tour will appeal to all those who have heard about Yosemite Valley, first-time visitors, and even locals who grew up exploring the park will find new information

about a destination that is truly the crown jewel of California.

[Back to Table of Contents](#)